

# The Messenger



January 2021

Tomas Griebing, President (tlginkc@yahoo.com)  
Michael Miklovic, 1st Vice President (stumper1972@aol.com)  
Rodger McReynolds, 2nd Vice President (rodger\_mcreynolds.hotmail.com)  
Armen Hovsepian, Treasurer (info@armenstamp.com)  
Michael Keil, Secretary (mkeil87859@hotmail.com)  
Jim McKinzie, Newsletter Editor (jimmckinzie1@att.net)

From your device or phone  
**January 2nd meeting**  
**Virtual Meeting Starts 2:00**  
**Info will come to your email**

## **Our Secretary Reports What You Missed:**

**Members who Logged into our Zoom meeting: 23**

**Treasurer:** The financial statement will be presented next month. No membership dues for renewing members for 2021. Even though no dues will be collected, please fill out and return the renewal forms that were included in the newsletter so we know you will be renewing your membership.

**Membership:** No new members.

**Secretary:** Nothing to report.

**Librarian:** Nothing new to report.

**Historian:** Nothing new to report.

**First Vice-President's Report:** Ballots for the best program of 2020 will be sent out in a few days.

**Second Vice-President's Report:** The updated library list is now online. There are approximately 700 items listed on the MPS marketplace. Please check out both of these features.

**Newsletter:** Updated emails and mailing addresses are needed so members can continue to receive the newsletter.

**Exhibits:** Barbara thanked Bob Burney for the excellent article in the newsletter and encouraged members to think about exhibiting in the future, whenever that will be.

**Old business:** All the current officers were re-elected for 2021. Thank you for agreeing to serve another year.

**New Business:**

**Announcements:**

**Show and Tell:** Dale found two MPS show covers with John J. Pershing cachets. Pershing was born in Laclede, Missouri.

**Program:** Jessica Hellings presented a program titled "Stamps of the South African Homelands." The four homelands were Ciskei, Transkei, Venda, and Bophuthatswana. She showed a lot of beautiful stamps and included a plethora of interesting facts. Discussion followed.

Respectfully submitted  
Michael Keil

**Log into Zoom on Saturday,  
January 2nd  
For  
Michael Keil's presentation,  
"Women in Antarctica"**

## ***New U.S. Issues for 2021:***

The first issues of the year. They have already added one from the initial announcement, August Wilson. So expect more to be added.



**Love(2021)**  
Forever First Class  
One Design, Pane of 20  
Issue Date January 14th  
Print Quantity-  
200,000,000 stamps



**Brush Rabbit**  
Additional Ounce Rate (20c)  
One Design, Pane of 20  
& Coil of 100  
Issue Date January 24th  
Print Quantity-  
Pane 50,000,000 stamps  
Coil 60,000,000 stamps



### **Barns**

Post Card Rate (36c)  
Four Designs, Pane of 20 & Coil of 100  
Issue Date January 24th  
Print Quantity-  
Pane 100,000,000 stamps  
Coil 400,000,000 stamps

### **August Wilson**

Forever First Class  
One Design, Pane of ????  
Issue Date January 28th  
That is all the information available at this time.



## ***Philatelic Happenings:***

Nothing that was available to report at press time. I hope this changes soon for all, dealers, collectors and the venues.

There are other ways to buy, like our new "Buy It Now" page on the MPS website.

Or maybe it is time to organize the backlog of purchases from years past. You might find a "gem" or two. Or you can get lots together for when we can meet again or post them on the website.

## ***MPS MARKETPLACE***

***Looking for something to place in your collection? Have a "Want" you would like others to know about. Go to our website and check out Marketplace. You will not be disappointed. We have several lots featured on pgs 11-12 of this newsletter.***

## ***The President's Corner:***

Dear MPS Members -

As we near the end of 2020, I want to thank each of you for your support of our club and our hobby. It has been quite the year hasn't it? I wish all of you and your family and friends happiness and health in the New Year. Here's to 2021!!

Tomas

The Midwest Philatelic Society Website and Blog is  
[www.midwestphilatelicsociety.com](http://www.midwestphilatelicsociety.com)  
Find previous newsletters, links to other stamp info and more on our website.

## ***Officers Elected for Another Term:***

The following have been elected to serve this club for the year 2021:

PRESIDENT— Tomas Griebing

1ST VICE PRESIDENT— Michael Miklovic

2ND VICE PRESIDENT—Rodger McReynolds

TREASURER—Armen Hovsepian

SECRETARY—Michael Keil

Thanks to the above members for being willing to serve another year through these challenging times. We all appreciate your efforts to keep this organization viable.

## ***Philatelic Ramblings:***

We need your renewal form! Please send in ASAP. That is how we will keep the records updated. Plus, with this ongoing problem of not being able to meet in person, the need for a membership directory has never been more relevant. By filling out the form on page 13, we can create this directory to get out to all members, so that you can connect directly. Please send in today. Thanks!

In going through past purchases that I have not either had time to add to my collection or had just put aside because something more exciting came along, I am disappointed in the lack of care put in accurately identifying stamps. As I go through collections, single purchases, etc., I have run into too many errors of identification this year. While most dealers and auction houses I deal with are good about refunding and taking this items back, not all are. And a collection is problematic. You, the buyer has to be vigilante and know that some key items may be incorrectly assigned to the wrong Scott#. How to solve this problem? Dealers and auction houses should be very careful in their identification procedures. Buyers should take more time in examining a potential purchase. Have the tools necessary to identify the stamp, an up-to-date catalogue, per gage, watermark detection etc. Collectors, are you just filling in a hole in the book that looks like what you want it to be or are you just lazy. With the year we have just gone through, with no immediate end in sight, what a great time to reexamine your collection or the items you plan to sell.

*JMc*

## ***Quiz is Back:***

The quiz is back with an interesting puzzle from Armen. Can you identify what the item on the right is and from what country? It is certainly challenging. Contact Armen and this editor with your answer. Good Luck!



## Steel Wheels Along Iron Rails

### Narrow Gauge Railways

### South West Africa's Swakopmund-Tsumeb Railway

South West Africa was the name for modern-day Namibia when it was under South African administration, from 1915 to 1990.

Previously, the colony of German South West Africa (1884–1915), became a League of Nations mandate of the British-ruled Union of South Africa, following Germany's defeat in World War I. The mandate was abolished by the UN in 1966, but South African rule continued. The territory was administered by the South African government from 1915 to 1978, when the groundwork for semi-autonomous rule was laid. During an interim period between 1978 and 1985, South Africa gradually granted South West Africa a limited form of home rule, in the formation of a Transitional Government of National Unity.

In 1990, South West Africa was granted independence as the Republic of Namibia with the exception of Walvis Bay and the Penguin Islands, which continued to remain under South African rule until 1994.

Narrow Gauge Railways of South West Africa (Republic of Namibia) 1915 - 1990



79<sup>th</sup> Anniversary of the 600 mm Narrow Gauge Swakopmund-Tsumeb Railway  
Issued 2 August 1985. Lithographed, Perf. 14½ x 14



0-6-0T Zwillings Schmalspur (SNR) back-to-back with freight cars, 1898



0-4-0T Feldspur Side-Tank, 1898



0-6-2T Side Tank, 1904



2-8-2 Henschel HD Smalspoor, 1912

Shortly after the first *Zwillings* locomotives were placed in service (1898 when the track gauge was 600 mm (23.6 inches)), it was found the tank engine's fuel and water capacities were insufficient for the distances covered in the German colonies in Africa, especially in the harsh conditions presented by the Namib Desert which had to be crossed between Swakopmund and Windhoek. To solve this, a four-axle water tender was attached to the twin engines. It served the dual purpose of providing seating for armed escorts.

In 1922, the South African Railways (SAR) took control of all railway operations in Southwest Africa (SWA), and began to regauge the line between Windhoek and Swakopmund, changing from 23.6 inches to 3'-6 inches. The locomotives were never reclassified or renumbered, retaining their former German identities until they were withdrawn from service. *Illinge* numbers 154A and 169B were the only known survivors of the *Zwillings* fleet to be taken onto the SAR roster. No 154A was employed in Windhoek

A postage stamp depicting the *Zwillings Schmalspur* was one of a set of four commemorative stamps issued to commemorate the narrow gauge locomotives which pioneered railways in the territory. The stamp design was by the noted stamp designer and artist Koos van Ellinckhuijzen.

The particular locomotives depicted were the second SWA pair, numbered 2A and 2B. The name of the station on the name board on the stamp, written in Fraktur script, is Otjimukoka. In 1903, this station was renamed to Johann Albrechtshöhe in honour of Duke John Albert of Mecklenburg, and again changed later to the shortened Albrechts. A head-on outline of an *Illinge* was used by the SWA postal authorities as a commemorative cancellation for Swakopmund on the date of issue. The stamp, the postmark and another painting of the *Zwillings* appeared on the first day cover which marked the release of the four stamps.

**Abducted by Nuts, to See a Mouse and a General by Jim McKinzie**

Dale's show and tell reminded me of a past time when some "friends" abducted me and took me on a one day road trip through the Missouri countryside. It was August and my birthday. A good steak and bourbon would have sufficed but OK! We headed out of Independence going east on US Highway 24. As we went through Lexington and started going past all the apple orchards, my first thought was, "Why are we going to Waverly, it isn't even apple season yet. But at Waverly we turned north to Carrolton to continue on to East US Highway 24. Finally we get to Brunswick, we stop and they all said we're here. Here, where? You're here to see the world's Largest Pecan. This group thought it would be funny to get my picture standing beside something I detest. Not a nut lover, whether they come off trees or are walking around. What surprises me is no pecan stamp to be found, in my memory and searches, nothing came up. Lots of other nut stamps out there but nothing on the grand and glorious pecan. Can you go to a holiday event from Thanksgiving to Christmas without a pecan pie showing up. Most candy or cookies my grandmother made, had pecans in them. Although she would kindly leave some for me that were nut free. Why no pecan stamps? The pecan tree is native only to a small portion of northern Mexico and the southern United States. While we have more flower stamps of late and animals, not anything like the stamp sheet pictured above. For the most part, the U.S. Stamp program has not produced many floral and fauna stamps over the years like many other nations. Maybe it



**#429 Kyrgyzstan 2013  
Walnuts**

is time for the "nut" stamps. You could have the pecan, macadamia nuts from Hawaii and the ever popular peanut. How about the acorn, yes that is a nut and the Native Americans ate and used them because they could be stored for years without spoiling. To fill out a sheet of stamps you could include the current leading "nut" from both political parties.



**#1766 United States  
White Oak  
From American Trees set**

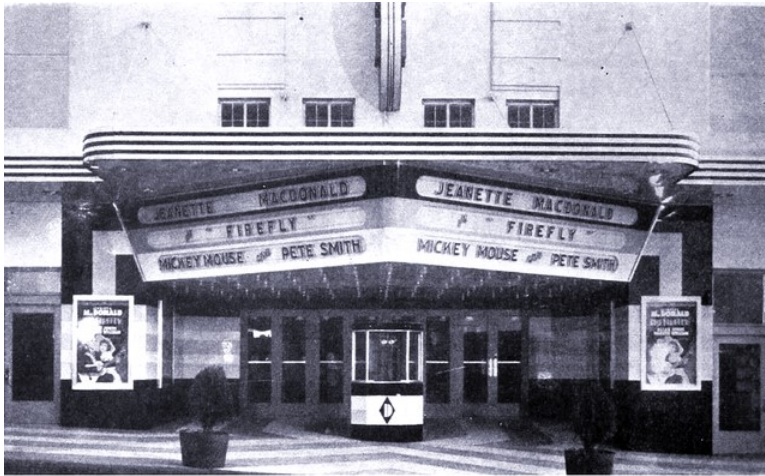


**A captive "nut" standing by a BIG nut  
outside Brunswick, MO**

There was nothing else really to do or see, so back in the van and we headed north on State Route 11 to Brookfield and then east on US Highway 36 to the boyhood home of Walt Disney, Marceline. They took me to this wonderful museum in the depot which is all things Disney. This was fun. When you see the depot and main street of the town, it is obvious that Walt's vision and inspiration for Main Street at Disneyland was his boyhood home. Disney was everything when I grew up. You watched the Mickey Mouse Club. You had the ears. You watched the Wonderful World of Disney on Sunday nights. You dreamed of going to Disneyland in California, yes California. Disney World in Florida was still in the planning stages and hadn't even been built. My grandfather loved Disney's animation. Each Christmas season, the Disney studios re-released one

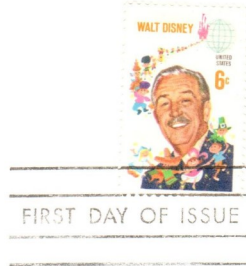


**#4194 United States  
Dumbo  
From the  
Art of Disney Series**

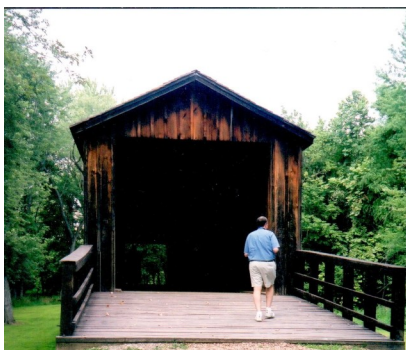


**The Delman Theater, Tulsa, OK in 1938 not long after it opened. Look close and you can see Mickey Mouse on the Marquee. Same theater my mother went to with her Grandmother as a girl. Unfortunately the theater is now gone.**

of the animation features, Pinocchio, Snow White, Dumbo or Cinderella. Disney had many of the classic animation features on a rotating 7 year cycle, so that each generation got to see them. I believe I was in high school before Dumbo got re-released. So usually on Christmas night we all loaded up in the car and headed to the Delman Theater. That was the theater that had the Disney movies. The excitement of going to the movie and seeing something for the first time. You may have seen clips of the movie on Disney on Sunday night. But you could hardly wait to see the full feature. There was always a Mickey Mouse or other Disney Cartoon that started the show. What fun! The smell of popcorn. Begging my grandfather or parents to let us sit up in the balcony this time. That never happened until I could drive myself but that is a story for another time. One summer we went to a matinee with some neighbor kids. Their mom took us, parked in the back where the parking lot was and we started walking around to the front. But instead of going down the alley on the west side of the building as our family always did, we went on the east side where there was a store front. It was called Massad's and the street windows were filled with lady mannequins with very sexy underwear. My little brother had lots of questions after that.



**#1355 United States  
Walt Disney  
Still My Favorite First Day Cover  
I own and will not part with.**



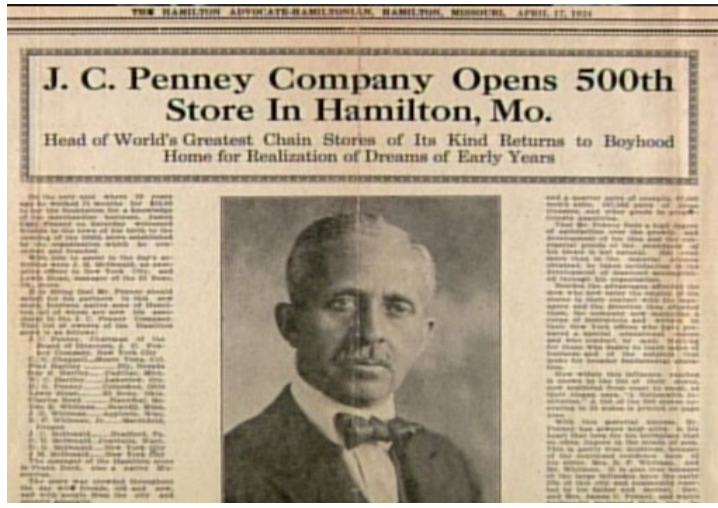
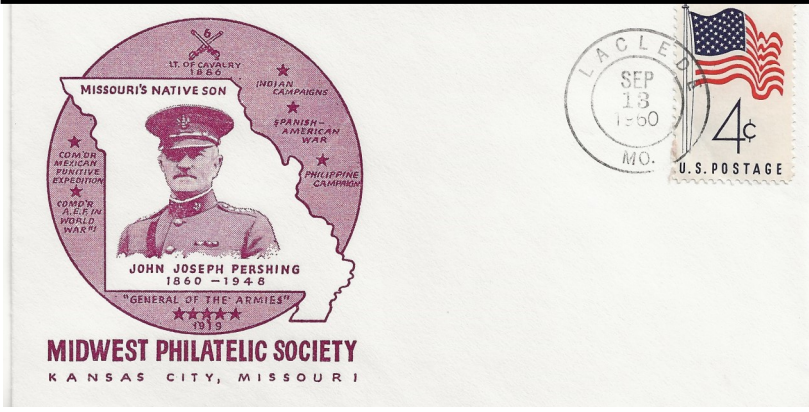
So going to Walt's boyhood town was really quite fun. I could have stayed longer. But the tour abductor (guide) said it was time to move on. We had other stops. So back in the van and now we were headed west on US Highway 36. I thought, that is good since I didn't know to bring an overnight bag and it didn't look like anyone else did. Next stop was Laclede, the boyhood home of General John J. Pershing.

Here we saw his boyhood home and the statue of Pershing. Just west of Laclede is Pershing State Park. The park includes great walking trails and for covered bridge lovers, the Locust Creek Covered Bridge. It is a beautiful state park and a nice place to visit.

Back in the van, we continued heading west but by the time we hit Hamilton, it was too late to go to the JC Penney museum. It had already closed for the day. JC Penney was raised on a farm outside of Hamilton, hence the museum in town to honor this department store icon. So where are the stamps in honor of these titans of retail, such as Penney, F.W. Woolworth, R.H. Macy or Sears & Roebuck. Maybe I am biased, since I grew up fascinated with retail. I went on to work and own retail stores. I see what other countries issue, then look had what we issue and it is somewhat lacking. I will always believe the best part of collecting is what you can learn about people, places and things. The history about a country that is forever recorded for all to see, across the globe.



Dale Smith's Show-N-Tell Covers. The postmark dates have no obvious significance but maybe one of you know?



We eventually made our way back to Independence, rather late in the day. Fun day! What I don't remember is where we ate that day. With this group, where we stopped and ate was always a high priority. Thinking back on this trip, I remember how much fun we had. Thanks Dale for your Show-N-Tell to remind me of that surprise birthday trip.

## Covers of the Arctic Circle by Michael Keil

### MIR at the North Pole

MIR is a deep-sea research submarine. MIR set the Russian flag during this mission at 4631 meters under the North Pole on the ocean floor. The cancellation on the stamp is from the onboard post office from the Russian icebreaker AKADEMIK FEDEROV, the command and supply vessel for the mission.

### Lindberg Polar Circle Route to China

By 1930, Juan Trippe of Pan American Airlines was looking for a way to extend air service to China. However, the airplanes, communications and navigational technology to provide air service across the Pacific Ocean did not yet exist for this to happen. Together with Charles Lindberg, Trippe looked for another possible route to the Orient. Lindberg proposed a route that would use the Arctic Circle. A plane could fly north across Alaska to the Arctic Circle, then west to Siberia, and turn south, arriving in China. To test this idea, Lindberg and his wife, Ann Marrow Lindberg, as his navigator and copilot, took off from New York City on July 27, 1931 on the inaugural leg of the survey flight to China. They flew over the Canadian wilderness to the Arctic Circle and then to Barrow, Alaska, arriving there on August 31. From there they flew to Nome, across the Bearing Strait to the Kamchatka Peninsula, the Kurile Islands, Tokyo, Shanghai, Nanking, and finally Hankow where the plane was damaged beyond repair.

While the survey flight accomplished its objectives it also revealed several things. The unpredictable and extreme weather made scheduled operations nearly impossible. The lack of reliable landing fields, inadequate maintenance facilities, and unreliable communications

meant that a massive investment in infrastructure would be required. Most significantly, the United States and the Soviet Union had severed relations in the aftermath of the Russian Revolution. This meant that the Russian government would not grant landing rights in Siberia or anywhere else in Soviet controlled territory and the United States would not grant an airmail contract to any entity doing business with the Russians.



Hope you enjoyed this month's newsletter. Thanks to Mike K., Mickey M., Dale S. and Bob B. for their contributions. You can contribute too by emailing me for next month's issue. **Deadline for the February issue will be January 15th.** Happy stamping and enjoy this extra time with your collection. *Jim Mc*



## A Piece of MPS History from Mickey Marks

An interesting pamphlet produced by MPS. Mickey believes he got this sometime in the 1980's. Used for membership recruitment at shows?

# M·P·S



## MIDWEST PHILATELIC SOCIETY

Chapter 10 A.P.S. • Chapter 120 S.P.A.

Chapter 24 T.M.P.S.

Over 50 years of Philately

### A HISTORY OF STAMP COLLECTING IN KANSAS CITY.

In the summer of 1893, a group of stamp collectors met at the home of Dr. Theodore Stanley who then lived at 1206 Broadway, and organized what was the first recorded stamp club in Kansas City under the name of Kansas City Philatelic Society. Mr. W. V. Lippencott, a real estate man, was the first president and William C. Michaels, an attorney, was the first secretary. This club met regularly at room 201, Scheidley Building, then located at the southeast corner of 9th and Main Sts. It held periodic auctions and some of the printed catalogs of these auctions have survived showing dates of sales on December 10, 1895; March 11, 1896, and April 13, 1897. Mr. Carl Davis of 3715 Pennsylvania Ave., is the present owner of these old catalogs.

This first Kansas City Philatelic Society was discontinued about 1897 and the names of most members have been lost, but the names of several others have survived: Frank Bescher, who operated a produce business at the old city market; Willard E. Winner, who was the promotor of the Old Winner Bridge across the Missouri river which was never completed but whose piers were later used for the A-S-B bridge; M. O. Canfield, a post office employee; Allen Logan; H. W. Bellard and F. R. Hurst. So far as is known, Mr. William Michaels, who lives at 645 W. 56th St., is the only survivor.

On November 15, 1894, this Kansas City organization became Chapter No. 10 of the national stamp collectors American Philatelic Association (now Society) and the present Midwest Philatelic Society still carries on this Chapter membership which is now the third oldest Chapter in the United States, only St. Louis and Pittsburgh are older.

In February, 1905, another club was organized under the sponsorship of Frank Bescher and William C. Michaels, that bore the name of Kansas City Stamp Club. While this was mainly a junior organization of high school age, it was very active and attained a fairly large membership. A year or two after its start it rented a club room in the old Jenkins Building that then stood at the northeast corner of 13th and Grand Ave., where the regular meetings and auctions were held. Many out of town dealers coming through Kansas City exhibited their wares there and did a good business. The names of members of this club have mostly been lost but those of Arthur Nelson, Toby and Willy Fishman, Paul Luther, Carl Davis, Don Malcolmson, Charles and Calvin Rouse and Oscar Sutorus are known, in addition to the sponsors.

This club abandoned its club room in the Jenkins Bldg. but continued to meet in various places including the Dillenbeck School of Expression at 10th & McGee Sts. A sales department was carried out under the direction of Paul Luther which circulated books of stamps among the members, the stamps in the books being mainly supplied by Mr. Bescher.

This club also had silver membership pins made by a local jewelry firm in the form of replicas of the triangular Cape of Good Hope, bearing the inscription "Kansas City Stamp Club, Organized Feb. 1905". Each pin had the owner's initials engraved on the back.

After the Kansas City Stamp Club discontinued it was not until 1913 that another club came into existence. This was organized by Thomas "Navajo" Hunter under the name of the Kansas City Philatelic Society and held meetings at the Densmore Hotel. Many members of previous clubs joined this one but the records of officers have been lost with the exception of that of Paul Luther who was Secretary and Auction Manager. This Society survived until the start of World War I.

On October 29, 1920, a meeting of stamp collectors was held at the old Baltimore Hotel following a call by Mr. Michaels and Mr. Wood. This meeting was well attended and resulted in a permanent organization under the name of "The Kansas City Stamp Club" with Wilson D. Wood, President; W. C. Michaels, 1st Vice President; Allen Logan, 2nd Vice President and H. C. Warren, Secretary-Treasurer. The roster of 20 charter members included in addition to the officers: William Jerrems, Jr., Ora E. Stark, Paul Luther, Arthur L. Nelson, Seimpson Yeomans, E. A. Barry, W. C. Noel, S. H. Barnes, H. E. Noble, H. H. Dunham, James A. Goldsmith, C. F. Corbin, Dr. W. F. Kingman, Allen Rexroff, John Heffer and Robert W. Waddell.

Shortly after organization, this club rented club rooms in the Kemper Building on Delaware St., where regular meetings and auctions were held. In July, 1921, Mr. Warren resigned as Secretary and Allen Sears, a stamp dealer, was elected to succeed him. Mr. Sears' shop adjoined the club rooms. Mr. Sears resigned in 1922 upon discontinuing his business and Carl S. Davis established a stamp shop at the same location and became Secretary.

On January 28, 1921 the Kansas City Stamp Club held its first annual banquet at the Savoy Hotel at which one of the nation's outstanding authorities on U. S. stamps, Mr. Elliott Perry, appeared as guest speaker.

The officers of the Club for 1922 were: Ora E. Stark, President; Robert W. Waddell, 1st Vice President; W. G. Noel, 2nd Vice President and Allen Sears, Secretary-Treasurer. Paul Luther was Auctioneer. The second annual banquet was held on January 12, 1922, also at the Savoy, at which Mr. Allen Logan was the toastmaster. This club was discontinued sometime in 1923.

The present Midwest Philatelic Society was organized in 1925 as the Kansas City Precancel Club, by a small group of precancel fans who met in each others homes. Within a month or so a postoffice inspector, bothered with "nose

trouble", very questionably scared the britches off the members, who, rather than spend the threatened next decade in Leavenworth, hastily changed the name of the club to its present designation.

There was no other stamp club in Kansas City at this time; precancel collectors usually have other stampic lines, and soon the urgent need of such a club completely changed its character and the precancelites were outnumbered.

Meeting quarters other than homes were needed soon after the start. The Lewis George Library, 25th & Holmes, the Lutheran Church at 38th & Troost, the American Legion Building, 37th & Broadway, the Downtown YMCA, the Pickwick Hotel, the Phillips Hotel, the Grand Avenue Methodist Church, the Chamber of Commerce of Kansas City, Kansas, and later the 1 West Linwood Hall have all been meeting places.

The Society has been incorporated. In 1931 women were first admitted, a most serious step, long debated, and not unanimously carried. In 1929 the Society was host to the Precancel Stamp Society's national convention. In 1941 and again in 1949 the Trans-Mississippi Philatelic Society favored us with their conventions.

The Society has long been Branch No. 10 of the A.P.S. In fact, the branch membership was transferred from the long dead club, kept alive on paper by a loyal A.P.S. member. The S.P.A. and T.M.P.S. have also granted branch or club memberships. For many years we were also Branch No. 4 of the P.S.S. During the war someone failed to pay the dues and the last vestige of its precancel origin was lost.

For the first 20 years of its existence the Society met on the first and third Wednesdays. During the war the club met on the first and third Thursdays. Meetings then were held on the first Thursday and third Tuesday of each month at the Phillips Hotel, 12th & Baltimore, Kansas City, Mo. Officers were: Dr. George Pendelton, President; Stella Bates, Secretary; John Snell, Treasurer; and Genevieve Cecil, Editor of the bulletin and show chairman.

From the Phillips Hotel meetings were changed to the Hotel Muehlebach and held twice a month. Later it was voted to hold meetings only once a month.

On January 6, 1979 the First National Drive-In Bank at 13th & Washington became our regular meeting site and so it is today, October, 1982. Regular meetings are held on the first Saturday of the month, except for July and August, at 2:00 P.M.

FOR INFORMATION CALL 373-7971.

## MPS MARKETPLACE

Now is a good time to check out the MPS marketplace and don't forget about the want list also. Remember you will need to contact the seller or the person listing the want directly. Their contact info is with the listing.

Good place to buy a present for a new recruit to the hobby, a fellow collector or just a present for yourself (those are the best)! Lots of good buys listed, with all sorts of good subjects.

With the MPS market you don't pay sales tax or commission fee although you might have a shipping charge unless you meet that member somewhere to make the exchange.

**Here are a few offerings from the Members:**



**LOT #714 from Armen Hovsepien**

**South Africa, Transkei set of 4, MNH**

**Yours for \$1.00**

GERMANY 1397 Price 160



GERMANY 1464 Price 175



GERMANY 1470 Price 175



**LOT #582 from Rodger McReynolds**

**53 MNH stamps from Germany SCN 1385 to 1540. Prices as shown on scans.**

**This is just an example of three images from this lot.**

**LOT #149 from Hans Vergara**

**SCN 230 Columbian 1893, 1¢ deep blue, pair, o.g., stamps never hinged, hinged in selvage only, Fine to Very Fine. Scott \$65**

**Yours for \$50.00**



## **MPS MARKETPLACE**

*Here are a few offerings from the Members:*



**LOT #631 from Robert Burney**

**China- CSS KG7 MH  
Difficult issue to find in VF or better.**

**Yours for \$8.00**

**LOT #545 from Neil Becker**

**U.S.- RW42, Mint, NH Duck Stamp**

**Yours for \$7.00**



**LOT #144 from Jim McKinzie**

**SCN 4626 Forever Love Ribbons,  
Sheet of 20, MNH, CV \$22.00**

**Yours for \$16.00**

**Just in time for those Valentine  
cards!**



**MEMBERSHIP APPLICATION AND RENEWAL:**

YES ✓ I would like to JOIN OR CONTINUE my membership in Midwest Philatelic Society.

Copy and save this form as a pdf or jpg document and send to: info@armenstamp.com

Or mail to: Armen Hovsepian  
Treasurer  
P. O. Box 24222  
Overland Park, KS 66283

- 2021 dues (individual) .....\$10.00 .....\$ PAID
- 2021 dues (family) .....\$13.00 .....\$ PAID
- 2021 Donation to My MPS Club .....\$ .....\$ \_\_\_\_\_
- 2021 Donation to MPS Library.....\$ .....\$ \_\_\_\_\_

..... Total Remittance \$ \_\_\_\_\_

We are updating our records and will appreciate if you complete the following:

Name: \_\_\_\_\_

Address: \_\_\_\_\_ City: \_\_\_\_\_ ST: \_\_\_\_\_ Zip: \_\_\_\_\_

Phone: \_\_\_\_\_ E-mail: \_\_\_\_\_

My collecting interests: \_\_\_\_\_

ALL MEMBERS WILL BE INCLUDED IN THE NEW MEMBERSHIP DIRECTORY, IF YOU WANT TO BE INCLUDED BUT WANT SOME INFORMATION TO BE WITHHELD PLEASE INDICATE WHAT YOU DO NOT WANT TO BE INCLUDED:

I ONLY WANT MY NAME and COLLECTING INTERESTS TO BE INCLUDED IN MEMBERSHIP DIRECTORY \_\_\_\_\_

YOUR COPY OF THE NEWSLETTER WILL COME BY EMAIL UNLESS YOU WOULD PREFER IT TO COME BY TRADITIONAL MAIL.

I AM UNABLE TO RECEIVE EMAIL, SEND MY NEWSLETTER BY MAIL \_\_\_\_\_